



METTA (LPG) PTE LTD
(A Member of the Metta Group)

2C, Jalan Pesawat, Jurong, Singapore 619359.
Tel: (65) 264 2169 Fax: (65) 264 2169
e-mail: metlpg@singnet.com.sg

Cryogenic & Industrial Gas Equipment



REGO® **CRYO-FLOW
PRODUCTS**



RegO Products USA

World Wide Leader as
Manufacture
of
LPG–NH³–Cryogenic–LNG
Equipment





REGO CRYO-FLOW

REGO STARTS IN 1998 A NEW FACTORY FOR MANUFACTURING
CRYOGENIC EQUIPMENT

- REGO CRYO-FLOW TAKES OVER THE CRYOGENIC MANUFACTURE GODDARD
WHICH WAS BASED IN MASSACHUSETTS



REGO CRYO-FLOW
PRODUCTS





REGO CRYO-FLOW

REGO CRYO-FLOW
PRODUCTS





REGO CRYO-FLOW
PRODUCTS





REGO CRYO-FLOW
PRODUCTS





REGO CRYO-FLOW
PRODUCTS



REGO® CRYO-FLOW
PRODUCTS



**LNG
& Natural Gas
Equipment**



Cryogenics



METTA (LPG) PTE LTD
(A Member of the Metta Group)

2C, Jalan Pesawat, Jurong, Singapore 619359.
Tel: (65) 264 2169 Fax: (65) 264 2169
e-mail: metlpg@singnet.com.sg

- ▶ Defined as:
- ▶ Producing very low Temperatures

REGO CRYO-FLOW
PRODUCTS



Dr. Karl von Linde

- ▶ By liquidizing air, Dr. Karl von Linde created the preconditions for the production of oxygen in 1895 In Germany.
- ▶ With air liquefaction, Dr. Karl von Linde created the conditions needed to produce pure gases using low-temperature processes. These gases include not only oxygen and nitrogen, but also hydrogen and inert gases – a technology for which the future at that time just begun.
- ▶ Cryogenic compressed gases are used today world wide in all Industries.



Our Air



METTA (LPG) PTE LTD
(A Member of the Metta Group)

2C, Jalan Pesawat, Jurong, Singapore 619359.
Tel: (65) 264 2169 Fax: (65) 264 2169
e-mail: metlpg@singnet.com.sg

Air is a mixture of gases, 78% nitrogen and 21% oxygen with traces of water vapor, carbon dioxide, argon, and various other components.

78,09 % Nitrogen (N²)
20,95 % Oxygen (O²)
0,93 % Argon (Ar)
0,03 % Carbon Dioxide (CO₂)

Other components are Helium (He) und Neon (Ne)



Some Uses of Compressed Gases

- ▶ Production of steel
- ▶ Production of glass
- ▶ Production of mineral wool
- ▶ Casting of steel & other metals
- ▶ Production of Aluminium
- ▶ Welding and cutting steel
- ▶ Production of paper
- ▶ Fire protection
- ▶ Oil production
- ▶ Treatment of water
- ▶ Fish Farming
- ▶ Food processing
- ▶ Wine production
- ▶ Plant cultivation under glass
- ▶ Medical purposes



Nitrogen, N²

- ▶ Nitrogen gas has a wide variety of applications
- ▶ To preserve the freshness of packaged or bulk foods
- ▶ The production of electronic parts such as transistors, diodes, and integrated circuits
- ▶ Dried and pressurized, as a dielectric gas for high voltage equipment
- ▶ The manufacturing of stainless steel
- ▶ Use in military aircraft fuel systems to reduce fire hazard.
- ▶ Filling automotive and aircraft tires[4] due to its inertness and lack of moisture or oxidative qualities.
- ▶ as an inexpensive alternative to argon

Standard Technical Gases

- ▶ Nitrogen, N^2 $-195\text{ }^{\circ}\text{C}$, Refrigerations systems, cryo-surgery
- ▶ Oxygen, O^2 $-182\text{ }^{\circ}\text{C}$, Steel cutting and welding, Rocket fuel
- ▶ Carbon Dioxide, CO^2 -78°C , Fire fighting, Drink dispensing, Cryo surgery, refrigeration
- ▶ Argon, Ar, $-185\text{ }^{\circ}\text{C}$, Lighting
- ▶ Hydrogen, H^2 $-252\text{ }^{\circ}\text{C}$, Metal production, Rocket propellant
- ▶ Helium, He $-268\text{ }^{\circ}\text{C}$, Air Ballooning, Welding,

Storage of Technical Gases

- ▶ 1 Liter liquified Oxygen gives 862 Liter vapourized Oxygen.
- ▶ 1 Liter Liquified Nitrogen gives 697 Liter vapourized Nitrogen.
- ▶ Liquified gases are always stored in double isolated Cylinders or Tanks.



Transport Cylinder



PRODUCTS



REGO CRYO-FLOW
PRODUCTS



Transport (DOT) Cylinders



REGO CRYO-FLOW
PRODUCTS



Storage Tanks



METTA (LPG) PTE LTD
(A Member of the Metta Group)

2C, Jalan Pesawat, Jurong, Singapore 619359.
Tel: (65) 264 2169 Fax: (65) 264 2169
e-mail: metlpg@singnet.com.sg



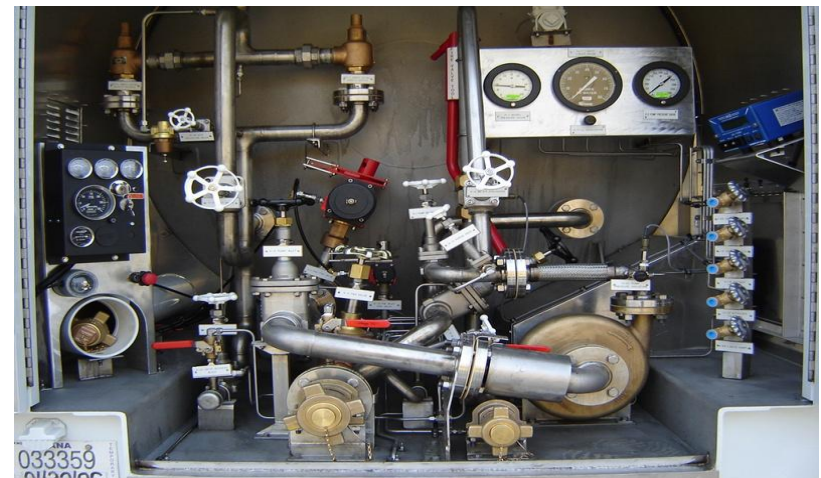
REGO CRYO-FLOW
PRODUCTS



Storage Tanks



Semi-Trailers



REGO CRYO-FLOW
PRODUCTS

Mobil Units



REGO CRYO-FLOW
PRODUCTS



Mobil Units- ISO Containers



REGO CRYO-FLOW
PRODUCTS



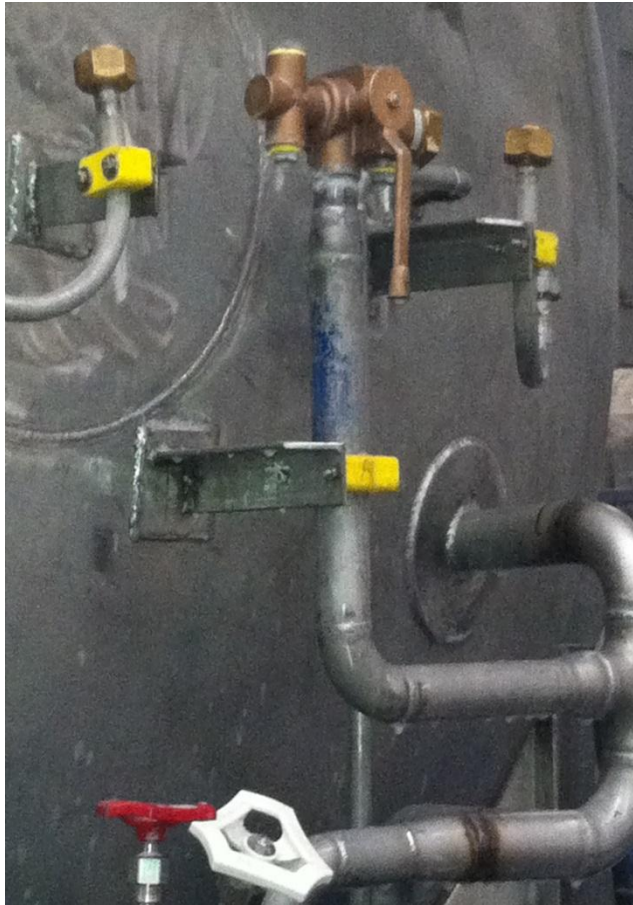
Mobil Units- ISO Containers



REGO CRYO-FLOW
PRODUCTS



TRAILERS



REGO CRYO-FLOW
PRODUCTS



Complete Industrial Applications



REGO CRYO-FLOW
PRODUCTS



LNG – Goddard Products



Tank in Tank



REGO CRYO-FLOW
PRODUCTS



Rego Valves on Cryogenic Cylinders



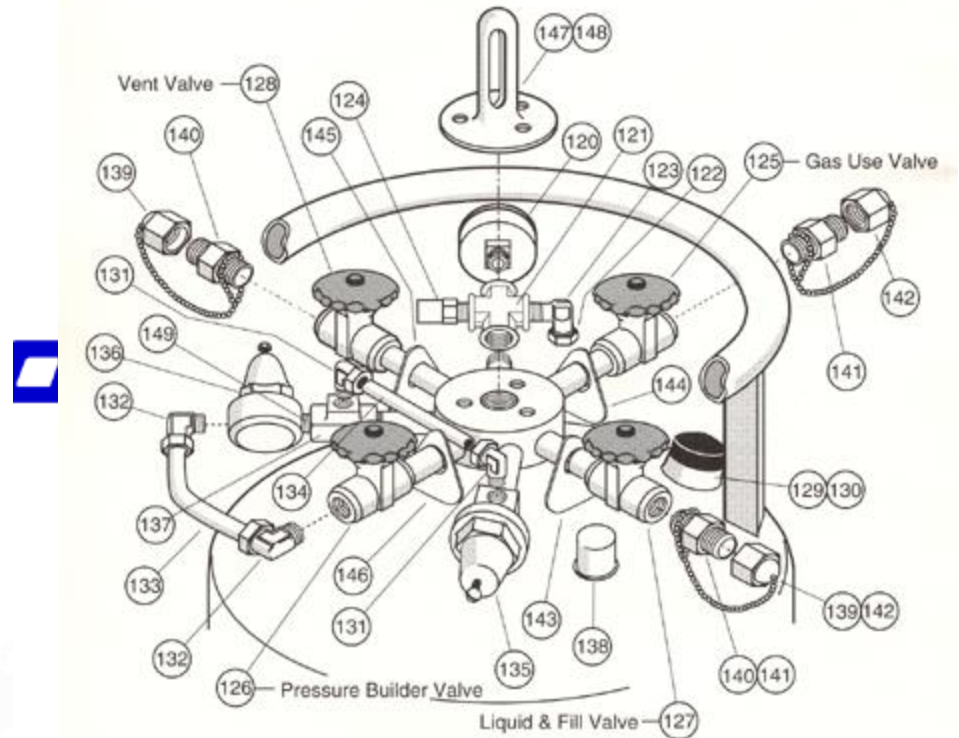
REGO CRYO-FLOW
PRODUCTS



Cylinder or small transportable tanks



DURA-MAX/DURA-MAX 5500



REGO CRYO-FLOW
PRODUCTS



RegO Programm



T009450 SHORT STEM SERIES

PRV9400 PRV'S

RG LIQUID REGULATOR SERIES

ECL ECONOMIZERS SERIES

*CBH COMBINATION PRESSURE
BUILD/ECONOMIZER
REGULATOR SERIES*

CHART/HARSCO

REGO CRYO-FLOW
PRODUCTS



RegO Short Stem Valves

Short Stem Cryogenic Valves T9450 Series & T9460 Series

Application

The T9450 and T9460 series valves are designed for use on portable cryogenic cylinders and other in-line shut-off valve applications. Approved for TPED in accordance with EN1626.

Features

- Spring loaded stem seal automatically adjusts for any gasket wear, eliminating the need to constantly retighten the packing nut.
- Non-rising stem and low profile allow the valve to fit into tight areas and still provide easy access.
- Unique pressure-sealed moisture barrier helps prevent freeze up at cryogenic temperatures.
- Conical swivel seal design helps prevent seat galling from over torquing.
- Cleaned for liquid oxygen service per CGA G-4.1.
- Maximum working pressure is 600 PSIG.
- Working temperature range is -320°F to +165°F.

- 100% Factory Tested

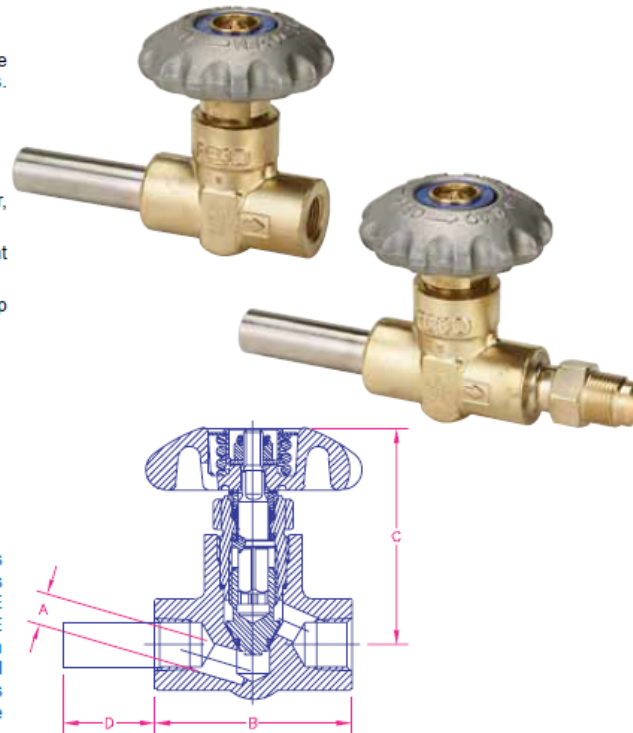
Materials

Body	Brass
Bonnet	Brass
Seat Disc	CTFE
Stem Seal Gasket	PTFE
Handwheel	Aluminum
Spring	Stainless Steel
Upper Stem	Brass
Lower Stem	Manganese Bronze

Ordering Information

Part Number	Inlet	Outlet	Orifice A	Length B	Height (Approx.) C	Tube D	Cv Factor
T9452	¼" F.NPT	¼" F.NPT	.250	2½"	2¾"	None	.72
T9453	¾" F.NPT	¾" F.NPT	.406				1.08
T9454	½" F.NPT	½" F.NPT					1.10
T9464CA	.675 Tube	¾" F.NPT	.406	2½"	2¾"	1½"	1.08
T9464DA						2¼"	
T9464ADA						3¼"	

π



REGO CRYO-FLOW
PRODUCTS



RegO Short Stem Valves

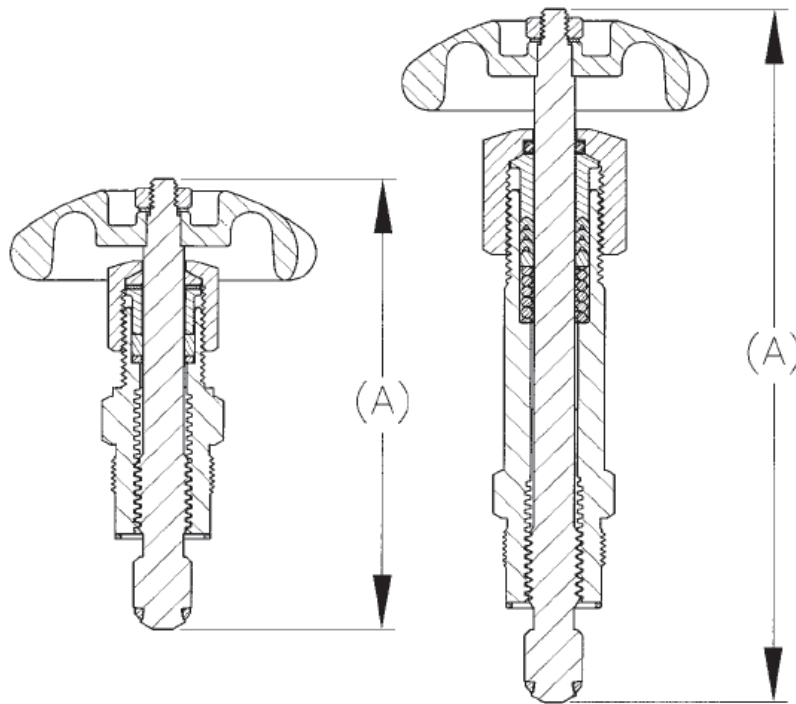


REGO CRYO-FLOW
PRODUCTS



Extended Stem Retrofit Kits

Extended Stem Retrofit Kits



Application

These retrofit kits can be used to convert the 9450 and 9460 series short stem shut off valves into extended stem style. The conversion can be done without removing the valve from your system. Available in two stem lengths. All kits are oxygen cleaned and packaged per CGA G-4.1.

Materials

Bonnet.....Brass
Seat Disc.....CTFE
Handwheel.....Aluminum
Packing.....PTFE
Stem.....Stainless Steel
Stem Seal Gasket.....PTFE

Ordering Information

Part Number	Stem Length A	Style
ES8450R	4"	Extended Stem, Std. Bonnet, Manual Packing
BK9450R	6.5"	Extended Bonnet and Stem, Spring Loaded Packing

REPAIR KIT T009460-80 FÜR T9450 UND T9460

REGO CRYO-FLOW
PRODUCTS

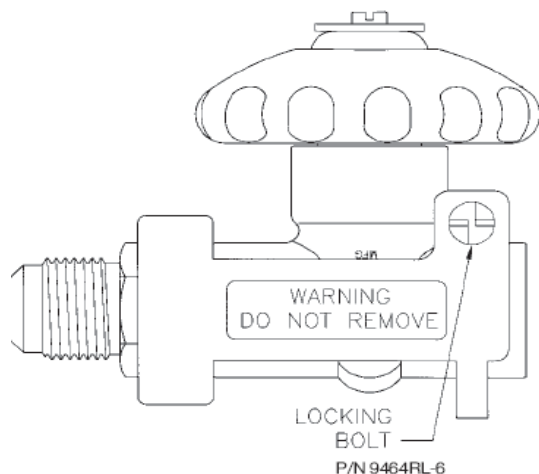


RegO-Lok

REGO-LOK™

for Securing CGA Fittings on Liquid Cylinders

Rego-Lok™



Satisfies CGA SB-26 and FDA requirements for medical and industrial liquid cylinders.

Ordering Information

Part Number	Item Description	Typical Service Connection
9464RL-0	REGO-LOK™ for 3/4" hex fittings	CGA 295
9464RL-1	REGO-LOK™ for 7/8" fittings	CGA 440, CGA 320 & CGA 326
9464RL-2	REGO-LOK™ for 1" fittings	CGA 540
9464RL-3	REGO-LOK™ for 1 1/8" hex CGA 580RL fitting by Rego	CGA 580
CGA580RL	3/8" MNPTxCGA for use with 9464RL-3	CGA 580

REGO-LOK™ is a registered trademark of Engineered Controls International, Inc. Patent applied for.

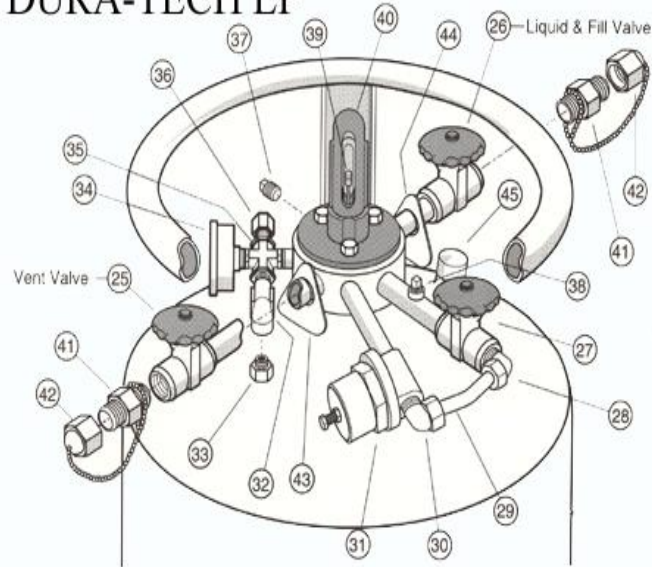
REGO CRYO-FLOW
PRODUCTS



RegO Pressure Relief valves



DURA-TECH LP



PRV9400 SERIE 1/4", 3/8", 1/2"

PRESSURE SETTING 0,7 - 40 BAR

When Industry Puts The Pressure On,

REGO® DELIVERS

PRV Series Relief Valves



REGO® CRYO-FLOW
PRODUCTS



RegO PRV'S

Relief Valves for Gas & Cryogenic Systems 9400 Series Brass or Stainless Steel, Non-ASME

Application

These relief valves are specifically designed for thermal safety relief applications and cryogenic liquid containers.

Features

- All valves are cleaned and packaged for oxygen service per CGA G-4.1.
- Bubble tight at 95% of set pressure.
- Easy to read color coded psig / bar labels.
- Adapters provide standard pipe thread connections for venting gas to the outdoors.
- Repeatable performance.
- 100% factory tested.
- Temperatures Range -320° to +165° F.

Materials SS Style

Body	Stainless Steel
Spring	Stainless Steel
Seat Retainer	Stainless Steel
Adjusting Screw	Stainless Steel
Pipe-Away Adapter	Stainless Steel

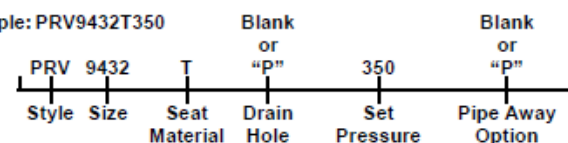
Materials PRV and B-Style

Body	Brass
Spring	Stainless Steel
Seat Retainer	Brass
Adjusting Screw	Brass
Pipe-Away Adapter	Brass

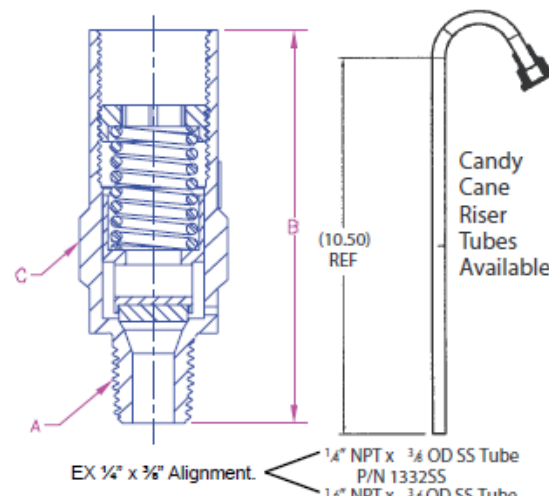
Ordering Information

Fill in the blanks with options below.

Example: PRV9432T350



This example part number indicates a 1/4" M.NPT PRV style brass relief valve with PTFE seat, set at 350 PSIG with drain hole and no pipe away adapter.



REGO CRYO-FLOW
PRODUCTS



RegO new Noise Reduced NR PRV'S

RegO "NR" Series Noise Reduction Relief Valve

Application

Designed especially for indoor applications such as laboratories where relief valve discharge noise is an issue. RegO's NR series PRV provides excellent flow characteristics with a 50% reduction in outlet noise related to valve relief.

Features

- Packaged and cleaned for oxygen service per CGA G-4.1
- Bubble tight at 95% of set pressure
- 100% factory tested
- Repeatable performance
- Temperature range -320° to +165° F

Materials

Spring	Steel
Gasket	PTFE
Body	Brass



REGO® CRYO-FLOW
PRODUCTS



RegO Cryogenic Regulators RG Series

Cryogenic Regulators RG Series

Application

The RG series cryogenic regulators are primarily designed to maintain pressure on cryogenic liquid within cryogenic containers. They may also be used in cryogenic lines, vaporizer and converter applications. They are especially useful in installations where space and cost limitations are important.

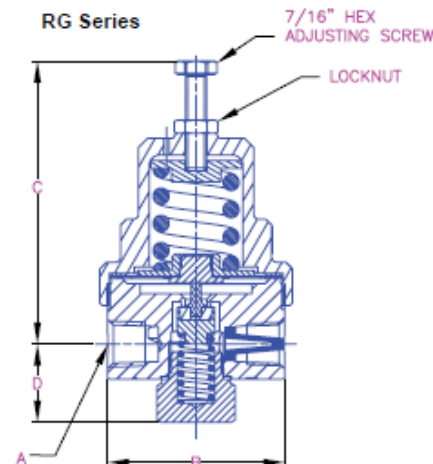
Features

- All parts are copper alloy (brass), PTFE and stainless steel—materials selected specifically for compatibility with cryogenic temperatures down to -320°F.
- Body and bonnet machined from solid brass bar stock.
- PTFE seat helps assure a positive shut-off at cryogenic temperatures down to -320°F.
- High and low pressure regulators are the same compact size—designed to fit in close quarters.
- Interchangeable with existing cryogenic regulator units.
- Inlet filter helps prevent foreign material from entering the regulator.
- Locknut is provided to maintain adjusting screw setting.
- Maximum inlet pressure of 550 PSIG.
- Cleaned for liquid oxygen service per CGA G-4.1
- 100% Factory Tested

Ordering Information

Part Number	Inlet / Outlet Connections (F.NPT) A	Width B	C	D	Pressure Setting (PSIG)	Operating Range (PSIG)
RG125A	1/4"	2 1/16"	3"	1"	125	25-250
RG300A					300	125-350

*Contact factory for additional settings.



Materials

Body	Brass
Bonnet	Brass
Seat Retainer	Brass
Seat	PTFE
Springs	Stainless Steel
Diaphragm Gasket	PTFE
Backcap Gasket	Copper
Diaphragm	Bronze

RegO Cryogenic Economisers ECL Series

Cryogenic Economizers ECL Series

Application

The ECL series cryogenic economizers are primarily designed to utilize the gas pressure in a liquid cryogenic cylinder that would otherwise be lost to the atmosphere through the pressure relief valve. They may also be used in cryogenic lines, vaporizer and converter applications. They are especially useful in installations where space and cost limitations are important.

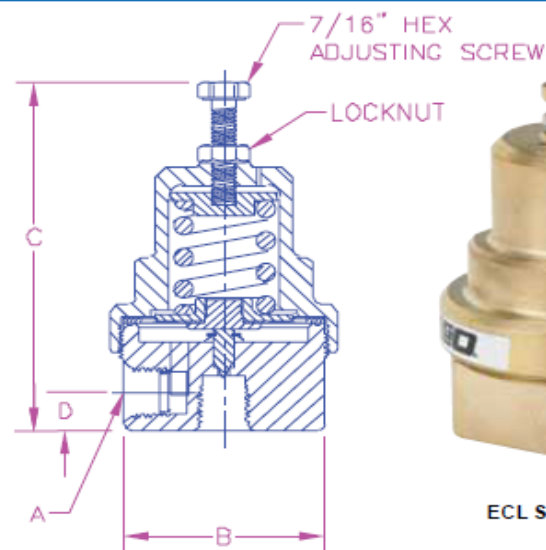
Features

- All parts are copper alloy (brass), PTFE and stainless steel—materials selected specifically for compatibility with cryogenic temperatures down to -320°F.
- Body and bonnet machined from solid brass bar stock.
- The ECL Series utilizes a stainless steel needle seat design that provides a very sensitive flow control at lower pressure settings.
- High and low pressure economizers are the same compact size—designed to fit in close quarters. The compact high pressure design has no loss of capacity.
- Interchangeable with existing cryogenic economizer units.
- Inlet filter helps prevent foreign materials from entering the economizer.
- Locknut is provided to maintain adjusting screw settings.
- Maximum inlet pressure of 550 PSIG.
- Cleaned for liquid oxygen service per CGA G-4.1
- 100% Factory Tested

Ordering Information

Part Number	Inlet / Outlet Connections (F.NPT) A	Width B	C	D	Pressure Setting (PSIG)	Operating Range (PSIG)
ECL22	1/4"	2 1/8"	3"	3/8"	22	10-150
ECL70					70	
ECL140					140	
ECL325					325	150-350

*Contact factory for additional settings.



ECL Series

Materials

Body	Brass
Bonnet	Brass
Seat	Stainless Steel
Springs	Stainless Steel
Gasket	PTFE

RegO Combination CBH Serie

RegO Combination Pressure Build/Economizer Regulator CBH & CBC Series

Application

Combines the function of RG and ECL Pressure Building and Economizer functions in one compact unit. Available in Chart and Taylor-Wharton piping geometries and a variety of pressure ratings.

Features

- All parts are copper alloy (brass, PTFE and stainless steel materials selected specifically for compatibility with cryogenic temperatures down to -320° F.
- Body and bonnet machined from solid brass bar stock.
- PTFE seat helps assure a positive shut-off at cryogenic temperatures down to -320° F.
- High and low pressure regulators/economizers are the same compact size designed to fit in close quarters.
- Interchangeable with existing cryogenic regulator units.
- Inlet filter helps prevent foreign material from entering the regulator.
- Locknut is provided to maintain adjusting screw setting.
- Maximum inlet pressure of 550 PSIG
- Cleaned for liquid oxygen service per CGA G-4.1
- 100% Factory Tested



CBH000125A

CBH Series

CBC Series

REGO CRYO-FLOW
PRODUCTS



Valves for bigger Transport Cylinders-Tanks



THE SAME EQUIPMENT

*T009450 T9460 SHORT STEM
SERIES*

PRV9400 PRV'S

RG LIQUID REGULATOR SERIES

ECL ECONOMIZERS SERIES

*CBH COMBINATION PRESSURE
BUILD/ECONOMIZER REGULATOR
SERIES*



REGO CRYO-FLOW
PRODUCTS



RegO Extended Stem Valves



ES 8450 Series



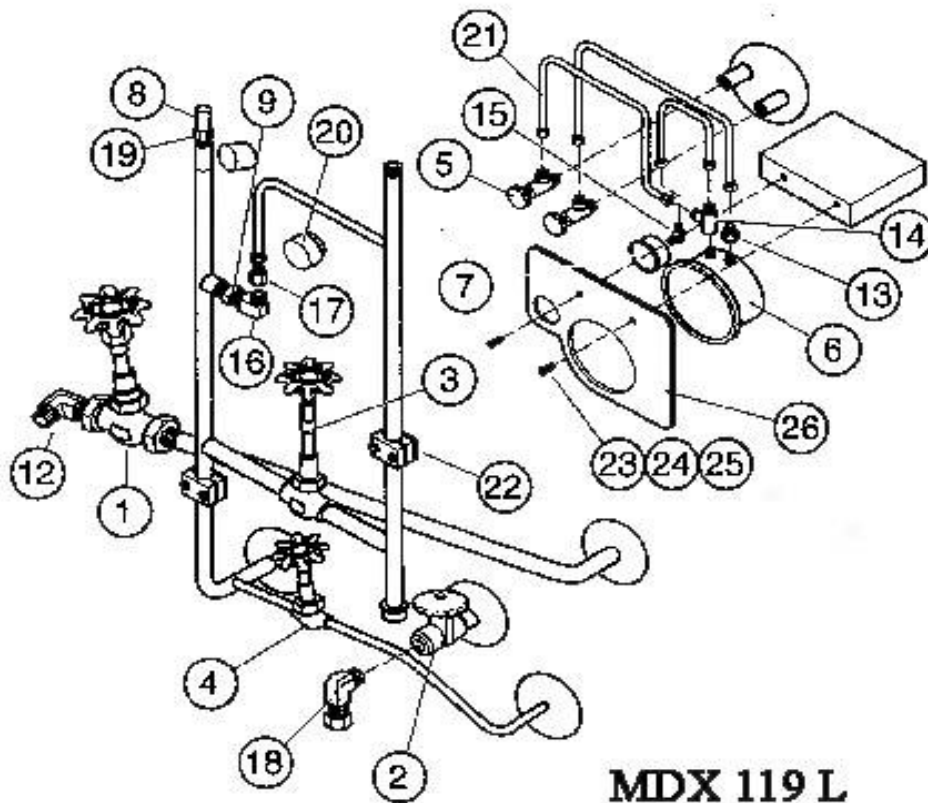
BK 9450 Series

Ordering Information

Part Number	Inlet/Outlet Connections
ES 8452	1/4" FNPT
ES 8453	3/8" FNPT
ES 8454	1/2" FNPT
BK 9452	1/4" FNPT
BK 9453	3/8" FNPT
BK 9454	1/2" FNPT
BK 9453FA	5/8" OD tubing x 3/8" FNPT
BK 9475A	5/8" OD tubing both ends



RegO Variation on Fill Installations



1



2



3



4

Extended Globe Valves for Storage Tanks



REGO CRYO-FLOW
PRODUCTS



RegO Extended Globe Valves



BK 9412S



BK 8408T



BKA 8412S



BK 9408AA

REGO CRYO-FLOW
PRODUCTS



RegO Extended Globe Valves



Goddard 210 Series



Goddard 232 Series

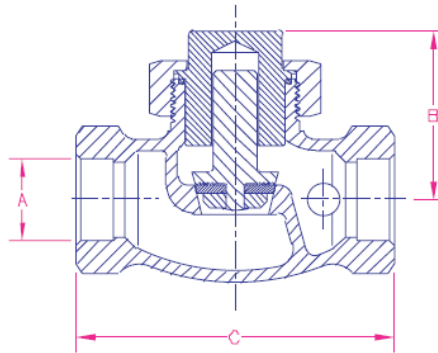
REGO® CRYO-FLOW
PRODUCTS



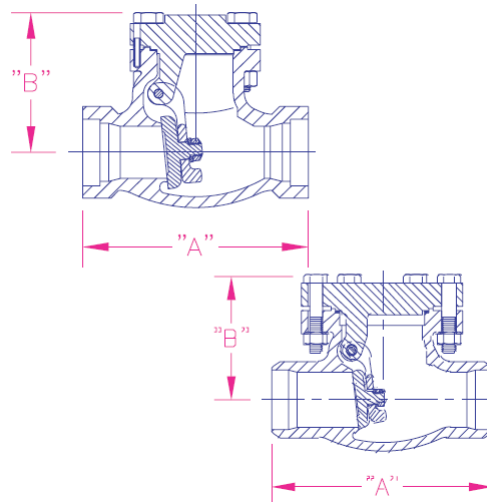
Horizontal or Swing Check Valves



BK8508S



BK8512S



REGO CRYO-FLOW
PRODUCTS



Complete CFM Manifolds.



CFM Series

304L

Part Number	Piping Size
CFM000002D	1"
CFM000004D	1½"
AFM000004D	1½"
SFM000004D	1½"



AFM Series

REGO CRYO-FLOW
PRODUCTS



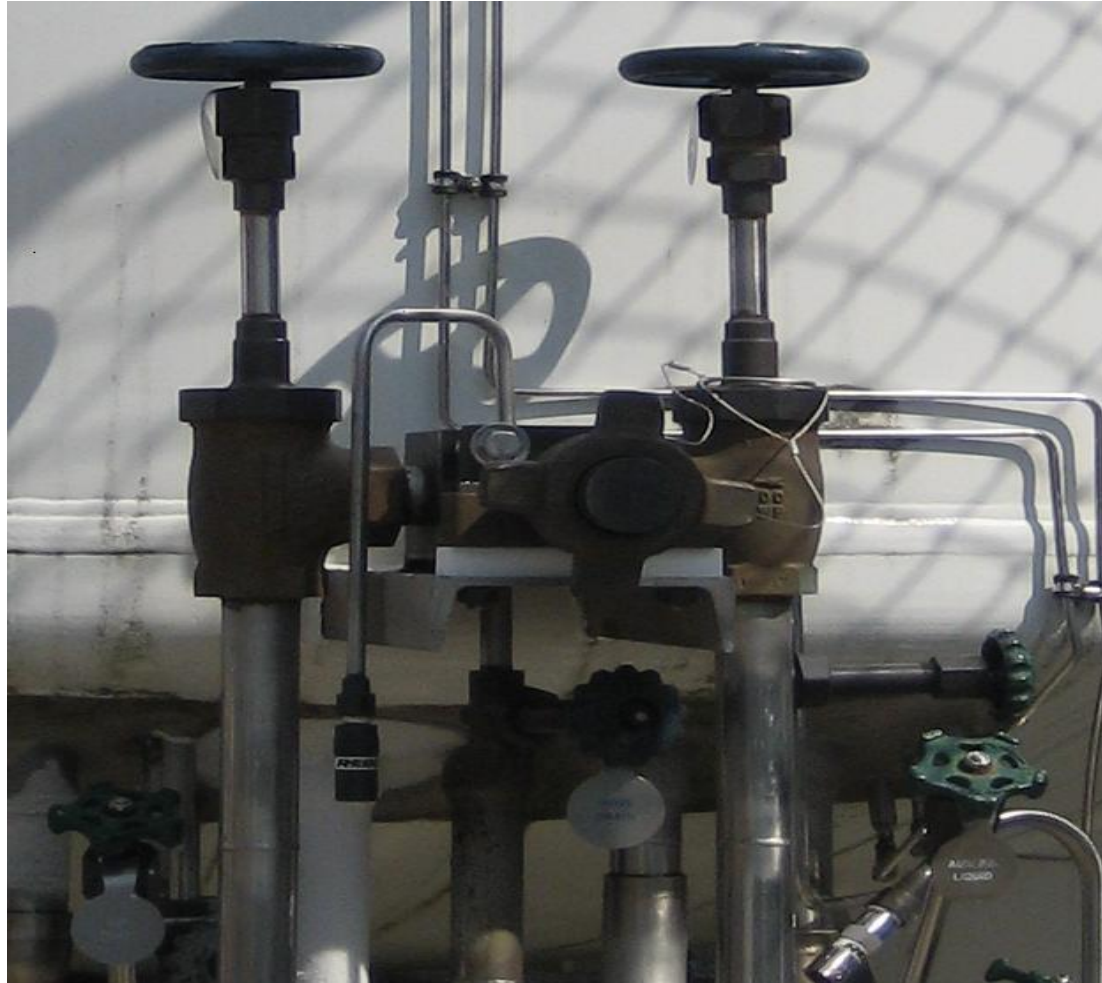
Nitrogen Industrial Plant



REGO CRYO-FLOW
PRODUCTS



Nitrogen Plant



REGO CRYO-FLOW
PRODUCTS



Nitrogen Plant



REGO CRYO-FLOW
PRODUCTS



Nitrogen Plant



REGO CRYO-FLOW
PRODUCTS



Nitrogen Plant



REGO CRYO-FLOW
PRODUCTS



Cylinder Filling Plants



**High Pressure Gas Master Valves
9560 Series**



STANDARD BONNET VALVE



PANEL MOUNT VALVE

REGO CRYO-FLOW
PRODUCTS



Cryogenic Regulators



BR1786 and BR1788



1780 Series

BR-1780 UND 1780 SERIE

REGO CRYO-FLOW
PRODUCTS



Inline Check Valves

Inline Check Valves CG Series Gas and Cryogenic Check Valves

Application

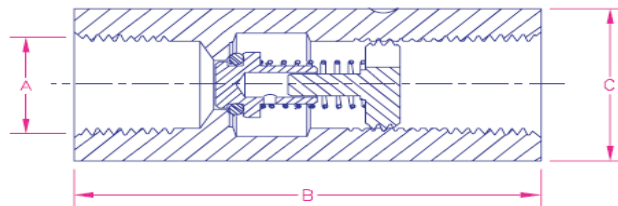
Inline check valves with metal seat option for cryogenic service or with soft seat option for leak free operation in gas service.

Features

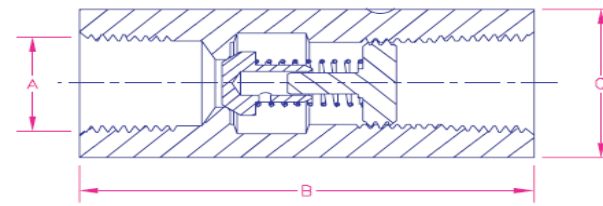
- One directional flow indicated by arrow on body.
- Large Cv for high flow capability and low pressure drop.
- Working temperature range:
 - 320° F to +165° F for metal seats.
 - 20° F to +165° F for soft seats.
- 1 psig opening pressure.
- Cleaned for use in oxygen service per CGA G-4.1

Materials

Body (B and BL suffix)	ASTM B16 Brass
Body (SS and SSL suffix)	203 Stainless Steel
Spring	Stainless Steel
Piston	Stainless Steel
O-Ring (soft seat option units only)	Viton
Metal Seat	303 Stainless Steel



Soft Seat Option



Metal Seat Option

REGO CRYO-FLOW
PRODUCTS



LNG

LNG & Natural Gas Equipment

REGO® CRYO-FLOW
PRODUCTS



LNG



REGO® CRYO-FLOW
PRODUCTS



LNG

- ▶ **LNG – Liquefied Natural Gas**
- ▶ LNG is natural gas that has been cooled down to the boiling point when it condenses to a liquid phase.
- ▶ **Basic characteristics:**
- ▶ LNG has a methane content of more than 75% and a nitrogen content of less than 5%.
- ▶ **Boiling temperature**
- ▶ It varies depending upon natural gas composition. Pure methane condenses at minus 161°C at atmospheric pressure.
- ▶ Colorless
- ▶ The volume of 1 Liter liquid produces approx. 600 volumes of gas.
- ▶ One normal cubic meter of natural gas is generated by approx. 1,7 liters of liquid.

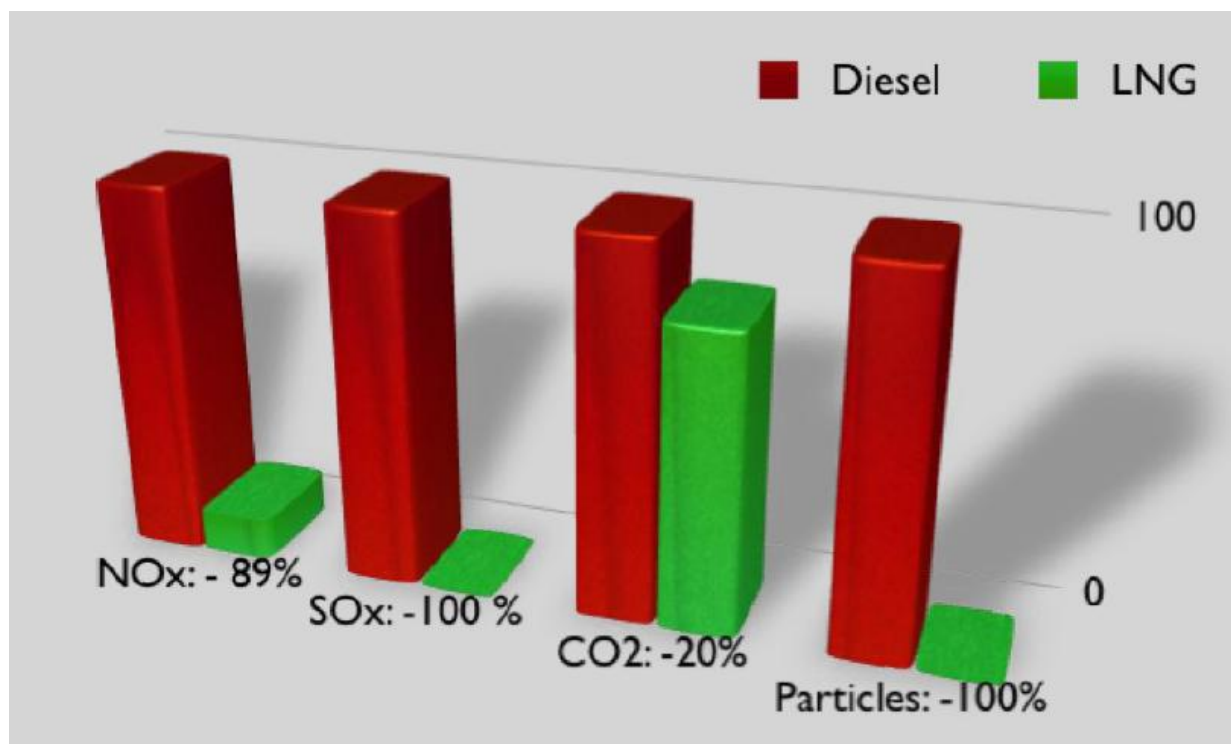


LNG

- **Source of LNG** , the major portions are converted to gas and transported via pipelines. However, in some cases there are reasons, to build local liquefiers.
- **Liquefier storage tanks**, ensure retention capacity for distribution.
- **Transport vessels and vehicles**, serve delivery logistics systems.
- **Satellite stations**, built at the gas user site or at local distribution centers.
- **Vaporization systems** are the majority portion of the satellite station. They convert liquefied gas back into the gaseous phase to serve process technologies and heating systems.
- **Vehicle refueling stations** are a special kind of satellite station which provides refueling of vehicles operating on compressed natural gas (CNG) or on liquefied natural gas (LNG) directly onboard.
- **Vehicle onboard LNG systems** ensure storage and vaporization of LNG for delivery of pressurized gas to the vehicle engine.



LNG Drivers





METTA (LPG) PTE LTD
(A Member of the Metta Group)

2C, Jalan Pesawat, Jurong, Singapore 619359.
Tel: (65) 264 2169 Fax: (65) 264 2169
e-mail: metlpg@singnet.com.sg

LNG Drivers

Why LNG as Transport Fuel

- Strong **reduction of SO_x and NO_x** emissions
- **Zero** particulates
- **Reduction of CO₂** emissions
- LNG fueled engines have a **lower noise production**
- Opens the path for further greening of the chain by introducing **bio-LNG** (LBG)
- **Gas readily available** and important transition fuel

IEA World Energy Outlook:
"a bright future, even a golden age, for natural gas."





METTA (LPG) PTE LTD
(A Member of the Metta Group)

2C, Jalan Pesawat, Jurong, Singapore 619359.
Tel: (65) 264 2169 Fax: (65) 264 2169
e-mail: metlpg@singnet.com.sg

LNG Drivers

LNG Chain from Bulk to Tank

Source



Bulk LNG



Small liquefaction
Bio LNG

Transport



LNG Trailer



LNG tanker barges



LNG bunker barges

Fuelling station



Fuelling station trucks



LNG bunker storage



LNG bunker vessel

End user



LNG truck



Inland ship



Ferry



Short sea ship

REGO CRYO-FLOW
PRODUCTS



LNG The Facts Video

<http://www.youtube.com/watch?v=vh8DtjzCumE>



LNG on Truck or Bus



REGO CRYO-FLOW
PRODUCTS



LNG on Truck or Bus



REGO CRYO-FLOW
PRODUCTS





LNG - Goddard Products



REGO CRYO-FLOW
PRODUCTS



LNG - Goddard Products



- LNG SATELLITE STATION. TURN-KEY DELIVERED TO NATURGASS VEST, NORWAY, WITH STORAGE CAPACITY OF 1 500 000 LITERS AND DELIVERY OF 4 200 NM³/HOUR, SERVING AN ALUMINUM FOUNDRY. NGV IS A LNG WHOLE-SALER. THE GAS IS DELIVERED BY NGV'S SHIP WHICH CAN BE SEEN IN THE BACKGROUND.

LNG - Goddard Valves



STORAGE TANK CONTAINING 257.000 LITERS OF LNG WITH A PUMP SYSTEM FOR FILLING ROAD TRAILERS, LOCATED AT A GASNOR LNG LIQUEFAC-TION PLANT IN SNURREVARDEN, NORWAY.

REGO CRYO-FLOW
PRODUCTS



LNG - Goddard Valves



Cold-box component
of a LNG liquefier



Liquefaction Technology

The process of liquefaction is based on cooling the gas to its condensation temperature -162°C , which is in the range of “cryogenic” temperatures and requires very special, highly technical designs. By transferring gas to a liquid state, this process reduces its volume nearly 600 times for simplified storage and transportation.

LNG Satelite Plant



LNG - Goddard Valves



- ▶ LNG semi-trailer with a capacity of 56 000 liters, delivered to Naturgass Vest, Norway



REGO® CRYO-FLOW
PRODUCTS

LNG - Goddard Products



- ▶ LNG Tanks Aritas Turkey



LNG - Goddard Products

LNG TANK Aygaz – DOĞALGAZ.



REGO CRYO-FLOW
PRODUCTS



LNG - Goddard Products

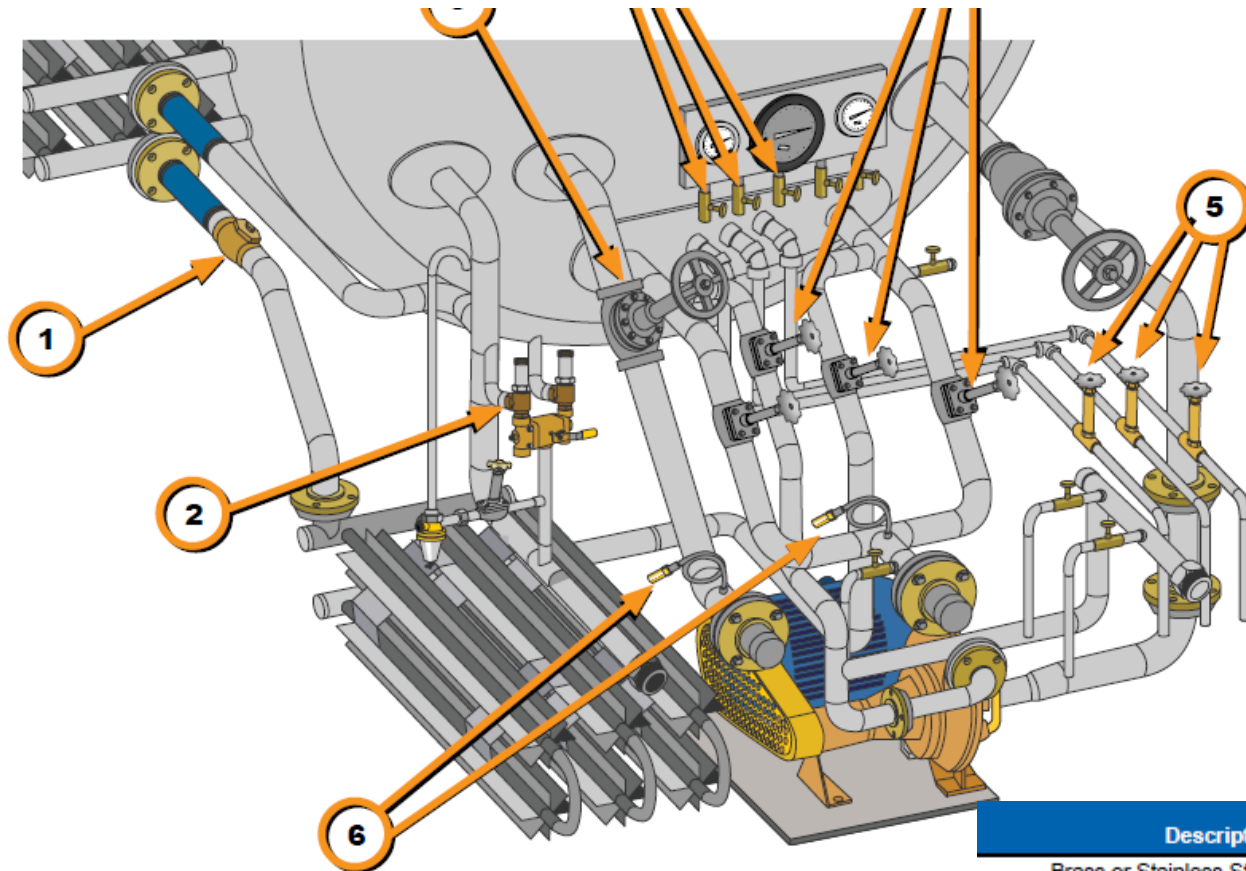
- ▶ Natural gas is becoming one of the most important primary energy sources for the 21st century. This is due to the large reserves throughout the world and because it is a relatively clean fuel. Natural gas produces about half of the carbon dioxide compared to other fossil fuels, with very few undesirable emissions. Natural gas is the clean fuel of choice as it helps solve two major environmental concerns: air pollution and the greenhouse effect.



Innovation. Experience. Performance.™

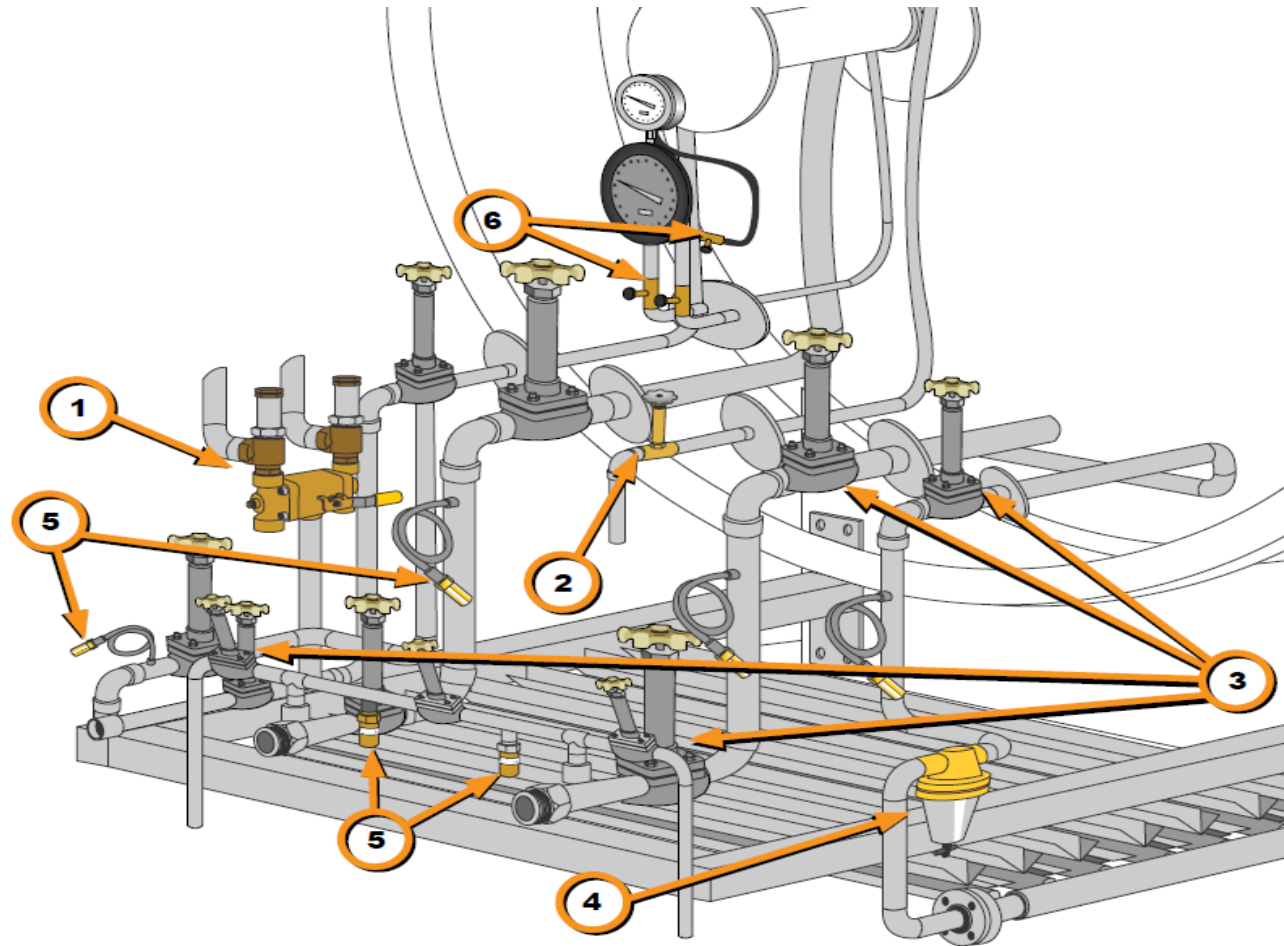


Cryogenic Bulk Tank and Transportation



Description
Brass or Stainless Steel Check Valve
Safety Assembly
Stainless Steel Globe Valve
Stainless Steel Globe Valve
Vent Trycock Valve
Relief Valve
Needle Valve

Cryogenic Bulk Tank and Transportation



REGO CRYO-FLOW
PRODUCTS



Cryogenic Bulk Tank and Transportation

	UNIT	Siz Inches	Size mm	DESCRIPTION	RegO/ Goddard
1	CRYOGENIC GLOBE STAINLESS STEEL VALVE	1/4"	8	SW/Butt Weld	SK009402SW (BW)
2	CRYOGENIC GLOBE STAINLESS STEEL VALVE	1/2"	15	SW/Butt Weld	SK009404SW (BW)
3	CRYOGENIC GLOBE STAINLESS STEEL VALVE	3/4"	20	SW/Butt Weld	SK009406SW (BW)
4	CRYOGENIC GLOBE STAINLESS STEEL VALVE	1"	25	SW/Butt Weld	SK009408SW (BW)
5	CRYOGENIC GLOBE STAINLESS STEEL VALVE	1 1/2"	40	SW/Butt Weld	SK009412SW (BW)
6	CRYOGENIC GLOBE STAINLESS STEEL VALVE	2"	50	SW/Butt Weld	SK009416SW (BW)
7	STAINLESS STEEL CHECK-VALVE	3/4"	20	Socket Weld	S-000886-6S
8	STAINLESS STEEL CHECK-VALVE	1"	25	Socket Weld	S-00886-8S
9	STAINLESS STEEL CHECK-VALVE	1 1/2"	40	Socket Weld	S-000886-12S
10	STAINLESS STEEL CHECK-VALVE	2"	50	Butt Weld	S-0886M-16W3A
11	Diverter valve 3 Way valve	1 X 3/4"	-	Thread NPT	DR6108
12	Diverter valve 3 Way valve	1 1/12" X 1 "	-	Thread NPT	DR6112
13	Diverter valve 3 Way valve	1 1/2" X 1/ 1/2"	-	Thread NPT	DR6113
14	Angle Relief Valve	3/4" X 1 "	-	Thread NPT	AR4106A
15	Angle Relief Valve	1" X 1 1/4"	-	Thread NPT	AR4108A
16	Angle Relief Valve	1 1/2" X 2 "	-	Thread NPT	AR4112A

Cryogenic Bulk Tank and Transportation



AR Series



DR6112 & DR6113



BK 9450 Series



840 Series



886 Series



LNG-Goddard Bronze Globe and Check Valves



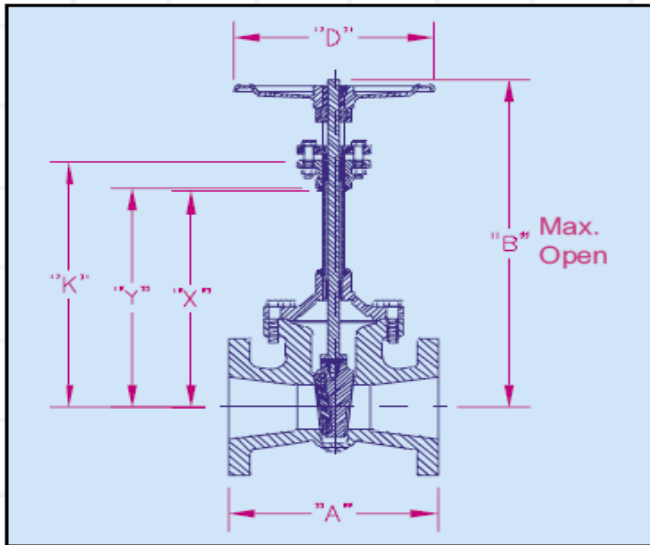
REGO CRYO-FLOW
PRODUCTS



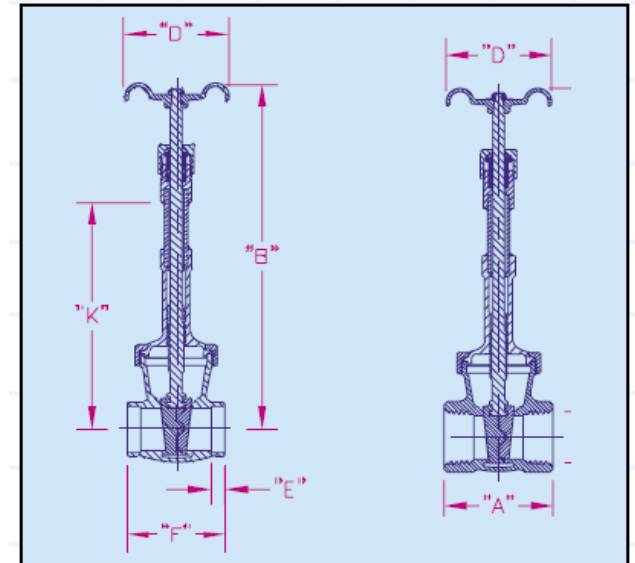
LNG-Goddard Gate Valves



Goddard 110 Series Stainless Steel Gate Valve for Cryogenic Service



Size
1"
1½"
2"
3"
4"
6"



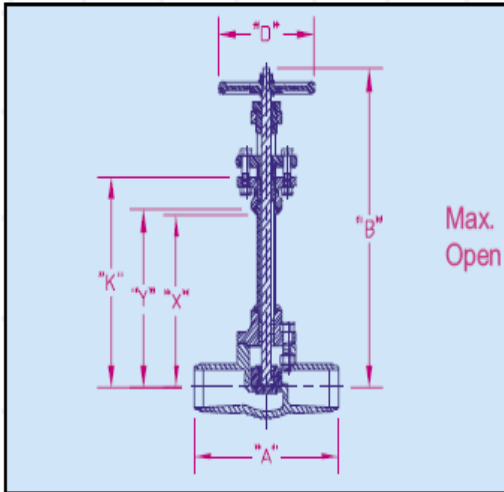
Goddard 322 and 326 Series Extended Bonnet Bronze Gate Valve for Cryogenic Service

REGO CRYO-FLOW
PRODUCTS

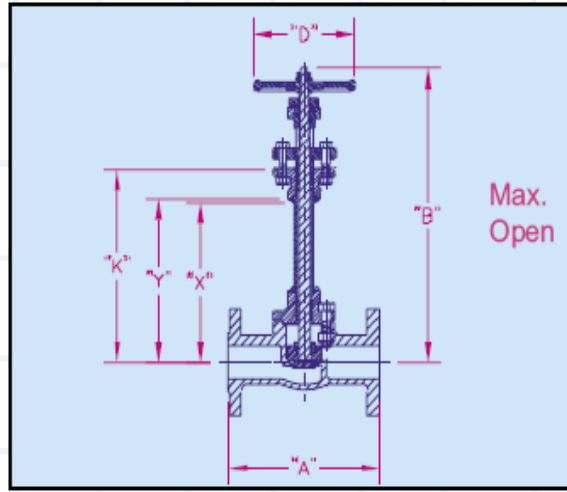
LNG-Goddard Globe Valves



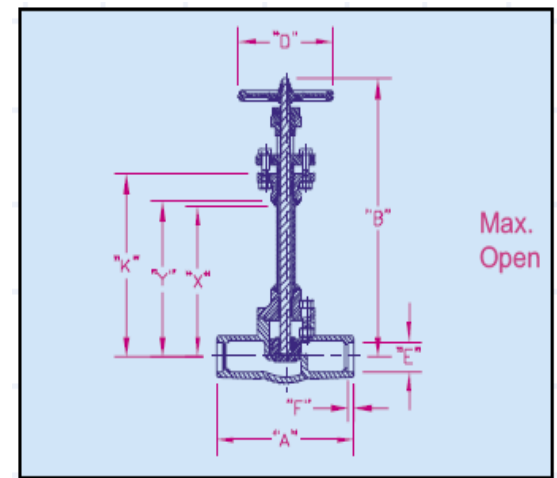
Goddard 210 Series Stainless Steel Globe Valve for Cryogenic Service



Butt Weld Ends



Raised Face Flange Ends*



Socket Weld Ends

PED oder TPED Approved

EUROPEAN PED/TPED CERTIFICATION			
The following product categories have received PED/TPED certification by the notified body Tüv, #0036			
Valve number	Maximum Connection Size	DN	PED Category
9560 series	1"	25	SEP
9500 series	1"	25	SEP
BK8400 series	2"	50	II
BK9400 series	2"	50	II
T9450 series	½"	15	TPED
T9460 series	½"	15	TPED
1682 series	¼"	8	SEP
BR-&1780 series	1"	25	SEP
RG series	¼"	8	SEP
ECL series	¼"	8	SEP
PRV9430 & PRV19430 series	½"	15	IV
SS9430 & PRV29430 series	½"	15	IV



*REGO CRYOFLOW CRYOGENIC AND
GODDARD PRODUCTS ALSO COMPLETE
FOR RUSSIA APPROVED*

REGO CRYO-FLOW
PRODUCTS

Our Competitors

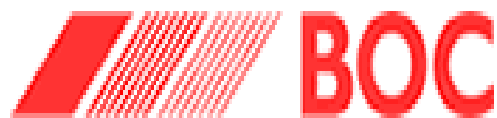


Gas Companies



METTA (LPG) PTE LTD
(A Member of the Metta Group)

2C, Jalan Pesawat, Jurong, Singapore 619359.
Tel: (65) 264 2169 Fax: (65) 264 2169
e-mail: metlpg@singnet.com.sg





METTA (LPG) PTE LTD
(A Member of the Metta Group)

2C, Jalan Pesawat, Jurong, Singapore 619359.
Tel: (65) 264 2169 Fax: (65) 264 2169
e-mail: metlpg@singnet.com.sg



REGO CRYO-FLOW
PRODUCTS

THANK YOU



WWW.REGO-EUROPE.DE